

Laſtly, It might have happened that this little *Leach* came out of the Body of ſome ſmall Fiſh into that of the *Bonite*, which had ſwallowed it. I made this Obſervation the 28th of *July*, 1724, in a Voyage from *Batavia* to *Bengal*.

Explanation of the Figure Tab. I. Fig. 2.

- A, The Body, in its natural Bigneſs.
 B, The Belly, through which appear ſome black Lines, which are its Entrails.
 C, The Protuberance, with which it faſtens itſelf.
 D, The Places where it places the Pump and Protuberance, when it moves along.
 E, The Head, under which is the Pump.
 The pricked Circles are to mark the Extent of the Motions of its Head and Belly.

III. Typus Eclipſeos Solaris obſervatæ Julii
 15, S. N. 4, S. V. Anno 1730. Wite-
 bergæ Saxonum, à Joh. Frider. Weidler,
 J. U. D. Mathem. Prof. Ordin. Reg. Soc.
 Scientiar. Pruff. Sodali.

*Tempus Ver.
 antem.*

H. ' "
 3 56 ○
 59 ○

Phaſes Eclipticæ.

Digit. Min.
 Sol oritur poſt Nubes.
 5 & paulo plus Sol latet
 poſt Nubes.

4 10

H.	'	"	Dig.	Min.
4	10	30	6	55
	26	0	6	30
	33	0	6	0
	38	0	5	30
	43	30	5	0
	47	0	4	30
	50	15	4	0
	53	30	3	30
	57	0	3	0
5	3	30	2	0
	7	0	1	30
	10	30	1	0
	13	0	0	30
	15	30		Finis.

A N N O T A T.

I. Sol oriens figuram orbis monstrat ellipticam : diameter verticalis duobus digitis five sexta sui parte contractior apparet horizontali.

Vid. Tab. Fig. 3.

II. Memorabilis erat conspectus orbis Lunæ aspero margine præditi, quoad partem quæ in occasum spectabat. Distincte enim cernabatur H. 4. M. 3. Vallis $\frac{1}{10}$ diam. Lunæ profunda & $\frac{1}{12}$ ejusdem diam. circiter longa. In progressu eclipseos asperitas limbi Lunæ minuebatur, & adhærente eidem fascia cœrulea abscondebatur. Hæc enim fascia sensim sole altius surgente dilatabatur. Tum præter colorem cœruleum etiam puniceus Lunæ proprius incumbens in oculos incurrebat, & circa finem deliquii fasciæ coloratæ spissitudo trigesima

trigesimæ sextæ parti diametri Lunarîs prope par videbatur.

III. Præterea juxta Lunarîs disci marginem coloratum perpetua Luminis solaris commotio notata est.

IV. Observatio ejusdem Defectûs Solis habita Patavii, ab J. Poleno.

ORIENTE Sole, Nubes tenues Finitorem quasi cingebant: quibus deinde evanescentibus, aer tantillum nebulosus fuit, ut maculæ solares haud fatis distincte apparerent.

<i>Digiti</i>	<i>Temp. Ver.</i>			<i>July 14. 1730. S. N.</i>
<i>Obscur.</i>	H.	'	"	
4	16	46	12	
3 $\frac{1}{2}$	16	48	7	
3	16	50	36	
2	16	57	24	
1	17	1	20	
$\frac{1}{2}$	17	3	29	
Finis totius Obscur.	17	6	8	

Tab. I.

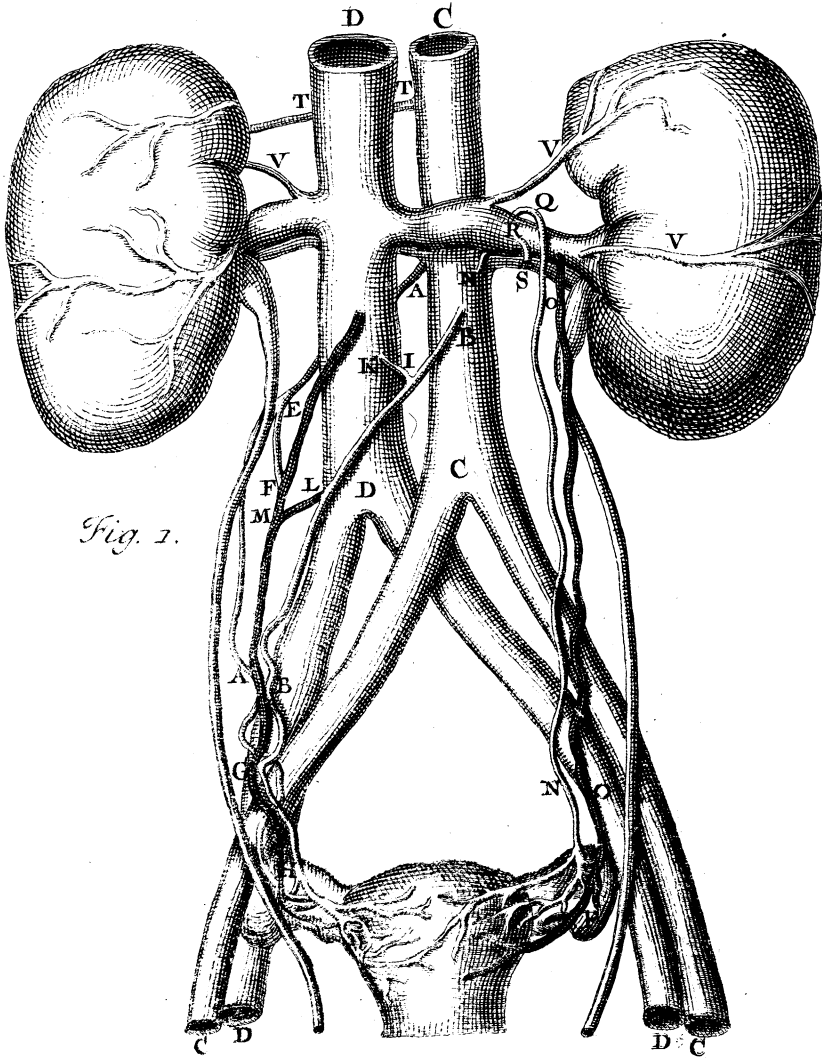


Fig. 1.

C. M. delin.

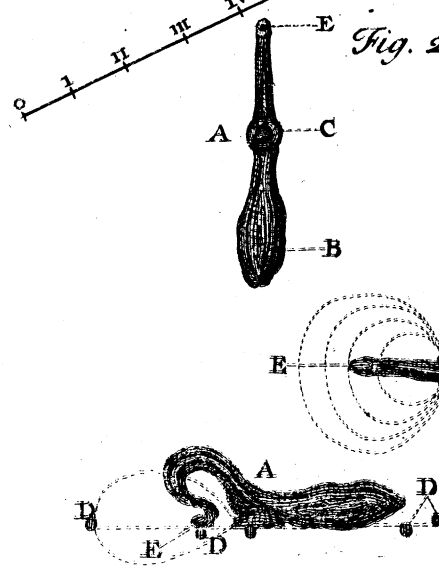
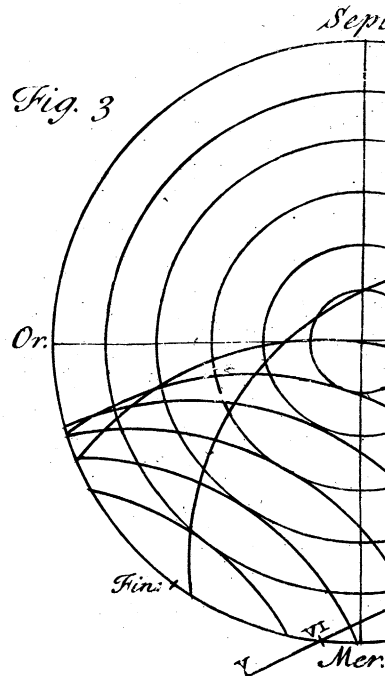


Fig. 2

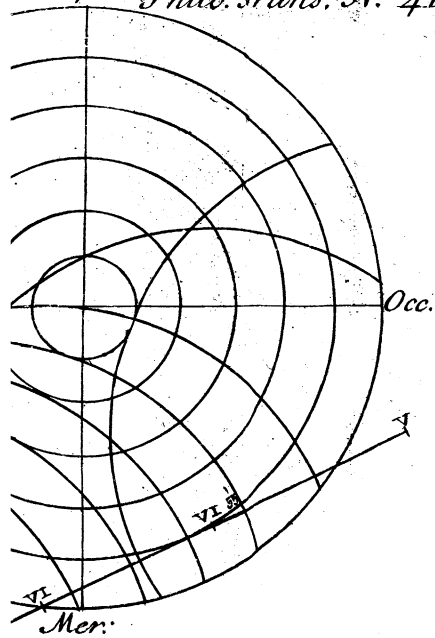
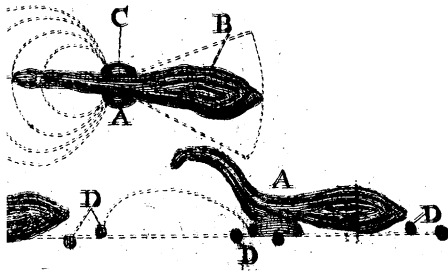
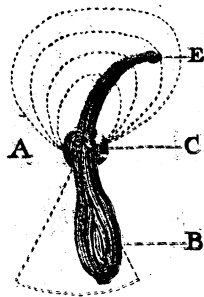


Fig. 2



Tab. I.

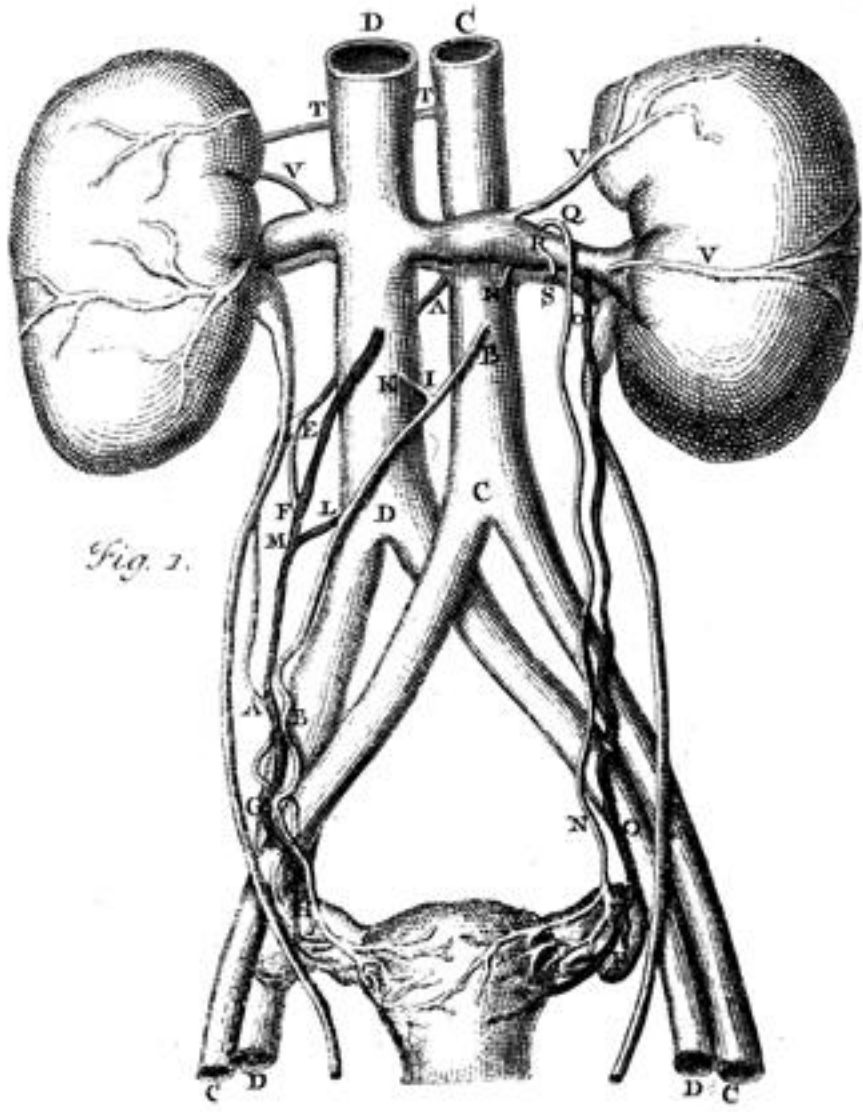


Fig. 1.

C. M. Jolin.

Fig. 3

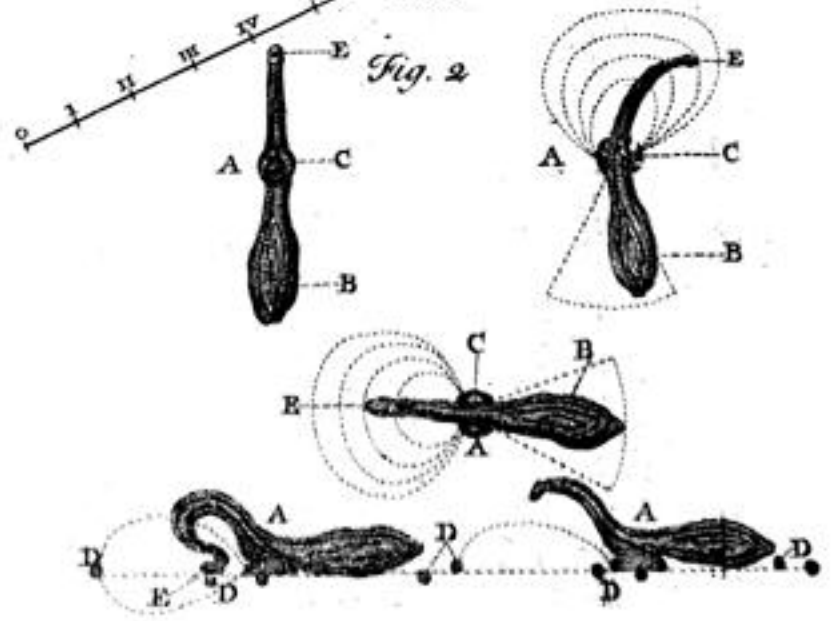
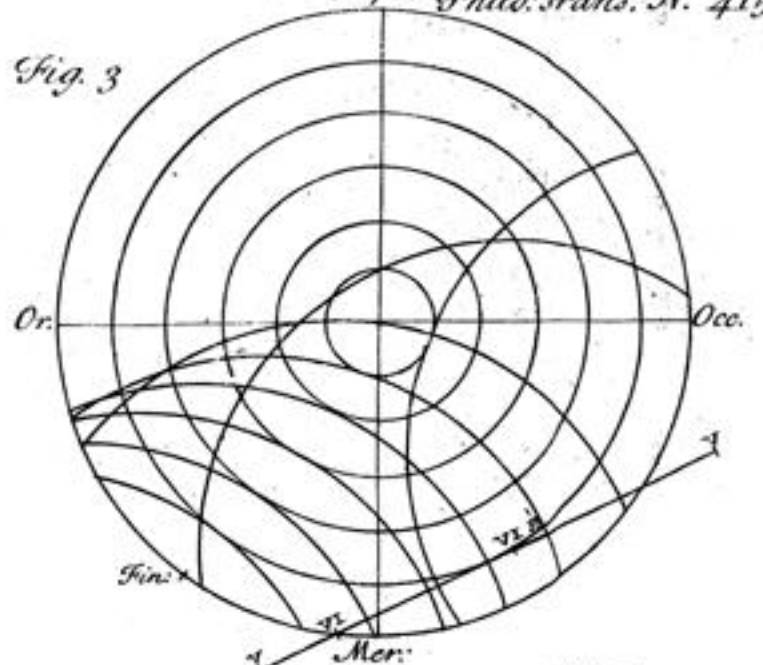


Fig. 2